

**Binks have reinvented the Airless spraygun with the introduction of the all new A3500 & A7500 spray guns.**

These gun utilise a unique fluid valve which totally eliminates the traditional needle valve/packing design resulting in a very light trigger pull, reduced operator RSi risk, and much lower maintenance than traditional airless spray guns. With gun bodies made from durable forged aluminium they are built to outlast the competition, and operators will feel the difference thanks to the contoured handle design. A quality range of tungsten carbide twist tips and fixed flat tips are available which provide superb atomisation and spray performance. The extra long in-built fluid filter provides 20% more filter surface to prevent paint blockages and reduce the frequency of filter cleaning and changes. A3500 & A7500 Airless Guns are augmented with a wide range of quality accessories to tackle all airless spray applications.

Choose Binks Airless Guns for the ultimate in spraying performance and comfortable design with built in durability and an extended working life

**Typical applications**

- Contractor industry - Interior/exterior
- Marine and Ship Building
- Farm and Agricultural Machinery
- Off Road vehicles
- Industrial Metal Structures
- Skips & Dumpsters
- Bus & Truck Manufacturing inc. undercoating applications
- Offshore Gas/Oil Industry and Corrosion Protection
- Fire Retardant paint applications
- Trains and rolling stock



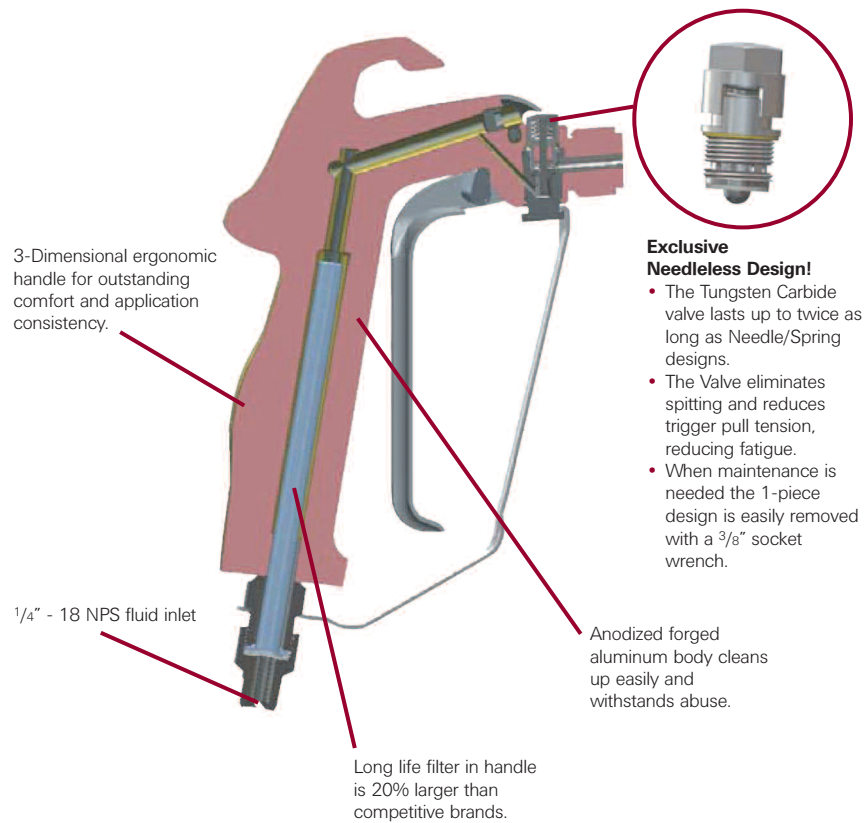
**A3500 & A7500 Airless Spray Guns**  
**Very easy maintenance "NO NEEDLE" design**  
**makes this gun the contractors 1st choice**

- Innovative, patent pending valve design eliminates needles and springs
- Four finger models offer lower trigger pull and better leverage
  - Two finger models provide more control
  - Tungsten carbide wear parts for long life
- Lower trigger pull and 3-D ergonomic handle reduce fatigue
- Large, long-life filter fills from the inside so it won't collapse
- Long life filter in handle is 20% larger than competitive brands

A3500 gun package includes: Spray Gun, Tip Guard, (2) 60 mesh Fluid Filters and a Spray Tip

A7500 gun package includes: Spray Gun, Tip Guard, (2) 60 mesh Fluid Filters, (order tip separately)

## Quick and Easy Disassembly for Cleaning and Maintenance - Less Downtime!



### Specifications

Maximum Fluid Pressure	3500 psi (241 BAR) or 7500 psi (517BAR)
Gun Body	Forged Aluminium
Fluid Path	Anodised Aluminium
Fluid Inlet	1/4" - 18 NPS(m)
Gun Weight	20.5 oz (580 g)

### Gun Part Number Description (guns with twist tips)

1108-3500-2*	3500 PSI Max (241 Bar), 2 Finger Trigger Kit includes; gun/tip guard/9-517-35 Tip and 2 x 60 mesh filters
1108-3500-4*	3500 PSI Max (241 Bar), 4 Finger Trigger Kit includes; gun/tip guard/9-517-35 Tip and 2 x 60 mesh filters
1108-7500-2†	7500 PSI Max (517 Bar), 2 Finger Trigger Kit includes; gun/tip guard and 2 x 60 mesh filters
1108-7500-4†	7500 PSI Max (517 Bar), 4 Finger Trigger Kit includes; gun/tip guard and 2 x 60 mesh filters

\*Includes tip 9-517-35 †order tip separately.

### Contractor tested

"Flat-out, the best airless spray gun I've used in my 21 years of experience. Easy to clean and maintain – keeps me on the job."

Mark Martinez,  
TOPARCO, Inc., Carol Stream, IL



## Spray Tip Selection Guides

To order A3500 psi Twist Tips, insert the numbers from the chart into this part number: 9- ---- -35.

<b>TWIST TIPS (3500psi)</b>	<b>6" (152mm) spray pattern</b>	<b>8" (203mm) spray pattern</b>	<b>10" (254mm) spray pattern</b>	<b>12" (305mm) spray pattern</b>
.007" (0.18mm) orifice	307			
.009" (0.23mm) orifice	309			
.011" (0.28mm) orifice	311	411		
.013" (0.33mm) orifice	313	413	513	
.015" (0.38mm) orifice	315	415	515	615
.017" (0.43mm) orifice		417	517	617
.019" (0.48mm) orifice		419	519	619
.021" (0.53mm) orifice			521	621
.023" (0.58mm) orifice				623

To order A3500 psi Flat Tips, insert the numbers from the chart into this part number: 9- ---- -F35.

<b>FLAT TIPS (3500psi)</b>	<b>6" (152mm) spray pattern</b>	<b>8" (203mm) spray pattern</b>	<b>10" (254mm) spray pattern</b>	<b>12" (305mm) spray pattern</b>
.007" (0.18mm) orifice	307			
.009" (0.23mm) orifice	309			
.011" (0.28mm) orifice	311	411		
.013" (0.33mm) orifice	313	413	513	
.015" (0.38mm) orifice	315	415	515	615
.017" (0.43mm) orifice		417	517	617
.019" (0.48mm) orifice		419	519	619
.021" (0.53mm) orifice			521	621
.023" (0.58mm) orifice				623

To order A7500 psi Twist Tips, insert the numbers from the chart into this part number: 9- ---- -75.

<b>TWIST TIPS (7500psi)</b>	<b>6" (152mm) spray pattern</b>	<b>8" (203mm) spray pattern</b>	<b>10" (254mm) spray pattern</b>	<b>12" (305mm) spray pattern</b>
.007" (0.18mm) orifice	307			
.009" (0.23mm) orifice	309			
.011" (0.28mm) orifice	311	411		
.013" (0.33mm) orifice	313	413	513	
.015" (0.38mm) orifice	315	415	515	615
.017" (0.43mm) orifice		417	517	617
.019" (0.48mm) orifice		419	519	619
.021" (0.53mm) orifice			521	621
.023" (0.58mm) orifice				623
.035" (0.89mm) orifice		435		

## Parts List

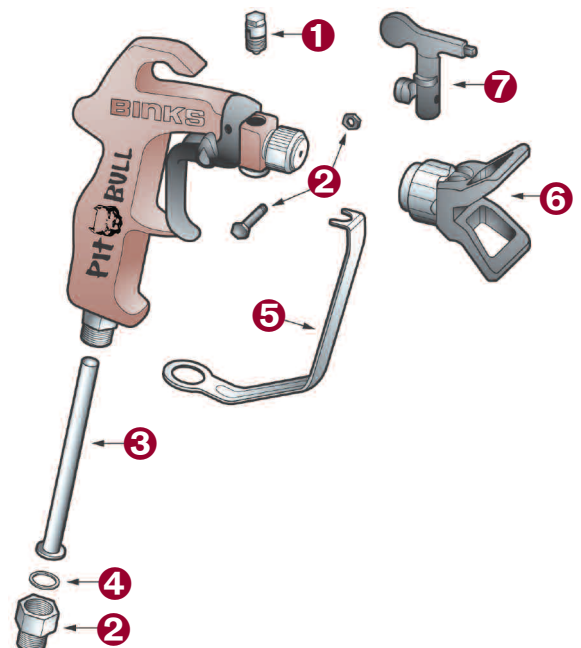
Item Number	Part Number	Description
1	1108-3575	Valve Cartridge
2	54-5760	Airless Gun Repair Kit (Screw, Nut, Inlet Fitting)
3	54-5730-K5	Fluid Filter 60 Mesh Kit (Qty: 5)
	54-5731-K5	Fluid Filter 100 Mesh Kit (Qty: 5)
4	54-5709-K10	Filter Seal Kit (Qty: 10)
5	54-5721	Trigger Guard
6	1108-35B	Safety Tip Guard - 3500 psi
	1108-35F	Flat Tip Guard - 3500 psi
	1108-75B	Safety Tip Guard - 7500 psi
7	9-XXX-35	Spray Twist Tip - 3500 psi
	9-XXXF-35	Spray Flat Tip - 3500 psi
	9-XXX-75	Spray Twist Tip - 7500 psi

## Accessories

Part Number	Description
72-2332	Swivel Adaptor 1/4"M x 1/4"F
72-2333	Swivel Adaptor 3/8"M x 1/4"F
52-5208	36" Airless Tip Extension 7500 PSI
52-5209	60" Airless Tip Extension 7500 PSI
52-5203	10" Airless Tip Extension 3500 PSI
52-5204	15" Airless Tip Extension 3500 PSI
52-5205	20" Airless Tip Extension 3500 PSI
52-5206	30" Airless Tip Extension 3500 PSI
52-5207	Airless Swivel Head

## High Pressure Hose Assemblies (Airless)

Hose connectors: 1/4" NPS			
Length	Bore	Pressure max.	Part no.
1m	3/16"	350 bar	H-5811
7.5m	3/16"	350 bar	H-5813
7.5m	1/4"	310 bar	H-5818
7.5m	1/4"	475 bar	H-7505



## Handy Clamshell Packs

Guns, parts and accessories are packaged for retail Clear clamshell packaging for all parts. Hangs from peg-hooks, stands up on shelves, and stacks flat. Open "cut-out" lets the customer squeeze the trigger without opening the package.



## A full Complement of Tips and Accessories complete the program

Binks offers a complete line of swivel adapters, tip extensions, hose, and fluid tips. Twist tips are available for 3500 psi and 7500 psi Airless Spray Guns. Flat tips are available for 3500 psi Airless Spray Guns. Tips and Tip Guards are colour coded for easy identification. Parts rated for 3500 psi are black in colour. Parts rated for 7500 psi are gray in colour.



Part No: A3500-2-75  
gun, hose and twist tip package (inc. tip)



Part No: A7500-2-75  
gun, hose and twist tip package (no tip)

## Airless gun/hose/tip packages

Part number for gun/hose/tip kits - for use with standard Binks MX & HP pump outfits:

<b>A3500-2-75†</b>	A3500 Airless gun with 2 finger trigger with twist tip attachment, tip and 7.5 metre Airless Hose
<b>A3500-4-75†</b>	A3500 Airless gun with 4 finger trigger with twist tip attachment, tip and 7.5 metre Airless Hose
<b>A7500-2-75*</b>	A7500 Airless gun with 2 finger trigger with twist tip attachment (no tip) and 7.5 metre Airless Hose
<b>A7500-4-75*</b>	A7500 Airless gun with 4 finger trigger with twist tip attachment (no tip) and 7.5 metre Airless Hose

†Supplied with tip 9-517-35 \*Order tip separately

### ITW Industrial Finishing

Ringwood Road, Bournemouth, Dorset  
England BH11 9LH  
Tel: +44 (0)1202 571111  
Fax: +44 (0) 1202 573488  
Email: industrial.mktg@itwfinishing.co.uk

### ITW Oberflächentechnik GmbH

Justus-von-Liebig-Strasse 31,  
63128 Dietzenbach Germany  
Tel: +49 (0) 6074-403-1  
Fax: +49 (0) 6074-403-281  
Email: marketing@itw-finishing.de

### ITW Surfaces et Finitions

163-171 Avenue des Auréats, BP 1453  
26014 Valence cedex FRANCE  
Tel: +33(0)4 75 75 27 00  
Fax: +33(0)4 75 75 27 59  
Email: mkt@itwsf.com